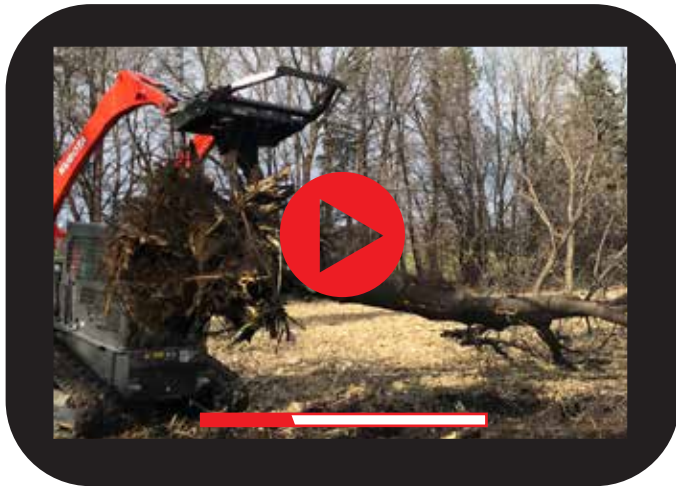




**NOTCH**  
Manufacturing, Inc.



## TREE PULLER



**WATCH THE NOTCH TREE PULLER  
DEMOS ON OUR WEBSITE**

[WWW.NOTCHMFGINC.COM](http://WWW.NOTCHMFGINC.COM)

### TREE PULLER - TP

50" TALL x 48" WIDE / UNIT BASE HEIGHT 22"

STANDARD TOP GUARD OFFERS PROTECTION AS WELL  
AS BETTER HANDLING OF TREES

CONSTRUCTED WITH HIGH TENSILE STEEL

BARBED TEETH AND RUGGED INNER EDGES FOR  
BETTER GRABBING AND CUTTING ABILITY

CYLINDER ON THE BACK SO IT IS PROTECTED AND OUT  
OF THE WAY

UNIT IS STANDARD WITH CYLINDER AND HOSES

UNIVERSAL AND EURO ATTACHMENTS STANDARD WITH  
OTHERS AVAILABLE



### OPTIONAL BOLT ON SCREEN

OFFERS MORE PROTECTION TO  
THE OPERATOR AND MACHINE

Notch Manufacturing reserves the right to change its products or their specifications at any time without notice or obligation.

**Notch Manufacturing Inc.**

23664 State Hwy. 4 • Lake Henry, MN 56362 • 320-243-7248 • Fax: 320-243-7245 • [www.notchmfginc.com](http://www.notchmfginc.com)